

MY HOME
KIWALE



Live Inspired

1 & 2 BHK Infinite Homes

What is **Inspiration?**

The Oxford dictionary defines inspiration, as the process of being mentally stimulated to do or feel something, especially to do something creative.

We believe Inspiration is a voice within, that tells you to live a life of your own creation.

Inspiration is to forget what is expected and chase an unexplored dream.

Inspiration is to acknowledge life's many challenges and find the courage to take them head-on.

Inspiration is like a flame that must be kept alive and thriving. Inspiration is what breathes 'life' into 'living'.



Uncommon **Inspiration**

When a man used the **Time** he had been served in a 10x10 jail cell, he found inspiration within to change the history of his Country.

At a time when women were allowed to speak only within four walls, she bagged a Nobel Prize and showed the world her true **Place**.

It didn't matter that he stood alone by his principles of non-violence, because he knew one day the whole nation would see the **Value** in them.

***Life isn't about doing many different things,
it's about doing the same thing differently.***



Calling **Inspired Souls**

Have people come up to you and told you that they feel engulfed in positivity when they talk to you? That you 'Inspire' them?

Then you're already on the path of being a person who wants to **accomplish** what matters, not what is expected.

A person who is **motivated** from within, and doesn't wait for someone else's push.

Someone who **aspires** for a better life not just in a materialistic way, but a holistic one.

An inspired soul who **willingly** uplifts others around by viewing the positive side of life.



Discover Uncommon
Inspiration
In Life



Your Enabler To
Live Inspired

We understand that it's easier said than done. Striking a perfect balance between profession and passion needs proper planning, the right environment and an Enabler.

That's why **My Home, Kiwale** offers what every inspired person needs **TIME | PLACE | VALUE**

We give you the space to focus on your life goals and leave the worrying to someone else. Us.



Imagine a life where the comfort of a home and the convenience of a Co-working space co-exist within the same periphery.

Being in a state of peace with a tranquil Meditation room so that nothing outside can shake you.

Loving your inner child or sporty youth at the Indoor games room, making age only a number.

Playing a part in environment care with a facility for Electric vehicle charging.

Inspiring happiness and camaraderie as you celebrate every occasion with a club house and party area.

We look forward to welcoming all inspired souls to

MY HOME
KIWALE

1 & 2 BHK Infinite Homes

Live Inspired



Live Inspired

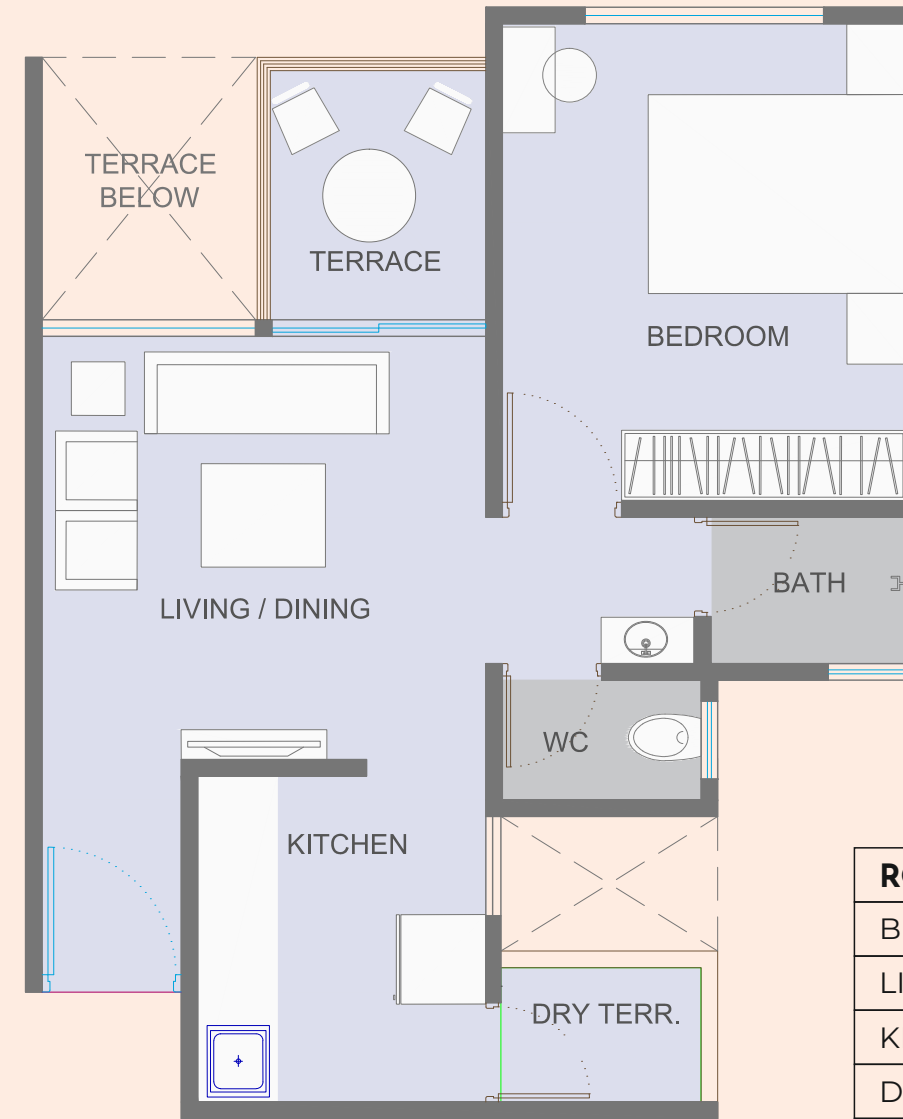
1 & 2 BHK Infinite Homes



1 BHK



Carpet area - 430 sq. ft.

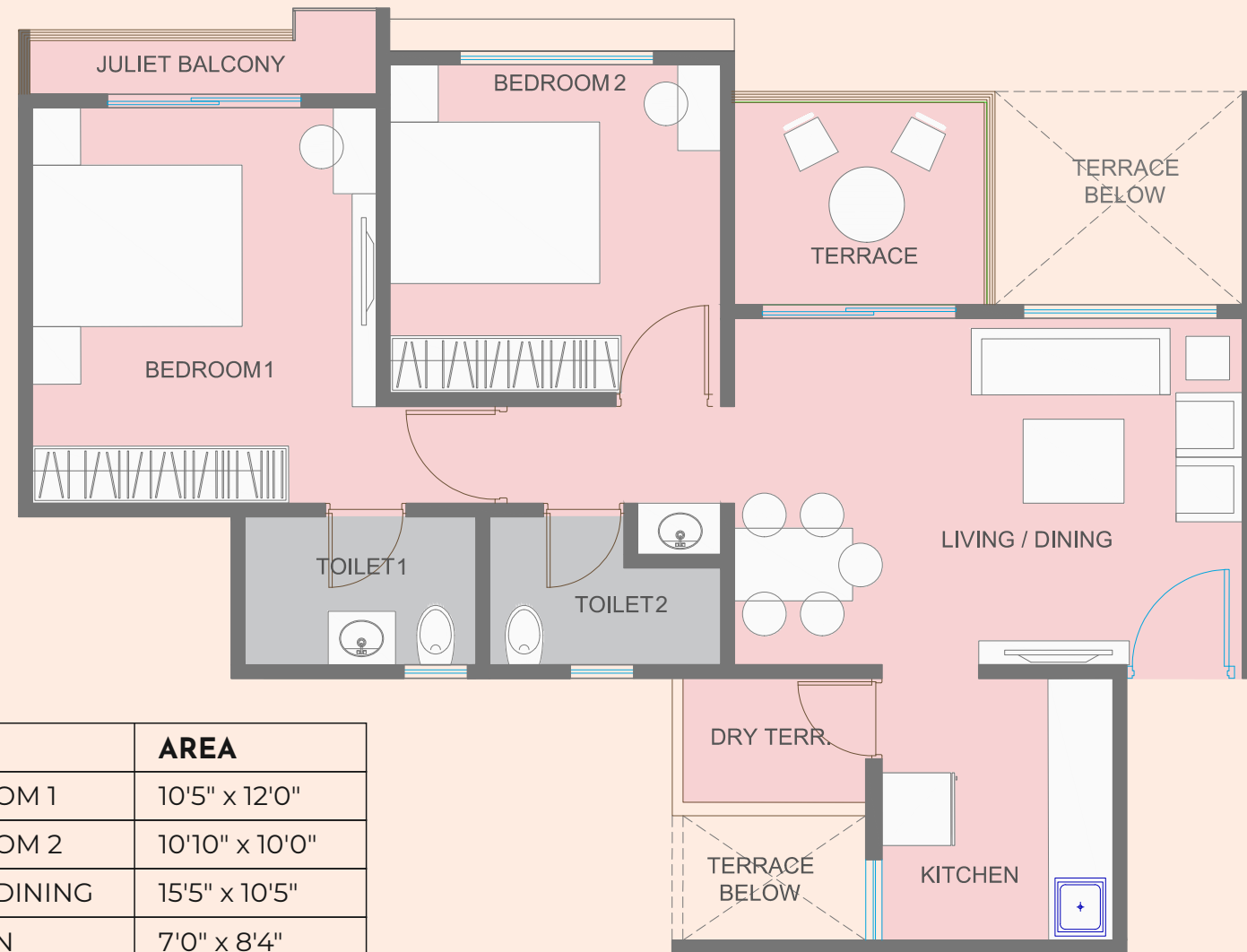


ROOM	AREA
BEDROOM	10'5" x 12'0"
LIVING/DINING	10'9" x 10'4"
KITCHEN	7'1" x 8'5"
DRY TERRACE	5'9" x 4'2"
TERRACE	5'7" x 6'4"
BATHROOM	3'9" x 3'6"
WC	4'9" x 2'9"

2 BHK



Carpet area - 660 sq. ft.



ROOM	AREA
BEDROOM 1	10'5" x 12'0"
BEDROOM 2	10'10" x 10'0"
LIVING/DINING	15'5" x 10'5"
KITCHEN	7'0" x 8'4"
TERRACE	8'0" x 6'5"
DRY TERRACE	5'9" x 4'2"
TOILET 1	7'0" x 4'5"
TOILET 2	7'0" x 4'5"

The **Amenities**

PREMIUM FACILITIES

- Business Centre & Co – working space
- Guest Bedroom for common use
- Swimming pool with pool deck
- Viewing gallery
- Yoga / Meditation Room
- Dance / Zumba Room
- Air-conditioned Gymnasium
- Air-conditioned Indoor games room
- Provision of Wi-Fi in every home
- Provision for charging of Electric Vehicles



INDOOR FACILITIES

- Club house with multipurpose hall
- Designer entrance lobby for all Wings
- Garbage chute with collection room for each building
- Name plate on main door
- Powder Coated Letter box
- Common toilet at parking level



OUTDOOR FACILITIES

- Landscaped garden
- Children's play area with rubber flooring
- Pickup & Drop off point at the Entrance Gate
- Space for community kitchen
- Designer Entrance gate
- Internal cement concrete roads
- Space for visitors parking
- Generator backup for all common areas & lifts



GREEN LIVING FACILITIES

- Provision for charging of Electric Vehicles
- 4 Star/Gold Rated Green Building
- Solar water heating in one toilet
- Street light with LED fittings
- LED lights in all common areas
- Timer circuits for all common electrical points
- Rainwater Harvesting
- Water softening plant
- Sewage treatment plant
- Reuse of Treated Sewage water for gardening & flushing
- Organic waste convertor



SAFETY & SECURITY FACILITIES

- Security cabin with common light controls & Intercom
- Society Office
- Firefighting systems
- CCTV Provision within the society
- Intercom System within the society
- Lighting Arrestor for each building



The **Specifications**

STRUCTURE & MASONRY

- RCC Frame structure
- 5" thick external & internal walls
- Double coat Sand faced plaster for external wall
- Gypsum finished Internal Walls

ELECTRICAL FITTINGS

- Adequate electrical points
- Electrical provision for split A/C in Living & Master bedroom
- Concealed copper wiring with Legrand / Schneider or equivalent make switches
- Fire retardant wires of Finolex / Polycab or equivalent make
- Miniature circuit breaker (MCB)
- Earth leakage circuit breaker (ELCB)
- Telephone point in living
- Wi-Fi provision for each flat
- Inverter provision for each flat

KITCHEN

- Granite kitchen platform with SS sink
- Glazed tile dado up to 2' above kitchen platform
- Provision for washing machine in dry terrace (Electrical & Plumbing)
- Electrical provision for Exhaust fan
- Electrical provision for Water Purifier
- Electrical provision for Chimney / Hob
- Water softening Electrical provision for Mixer & Microwave on Kitchen Platform
- Separate connections for drinking & domestic water

LIFT

- Machine room less Automatic SS finished lifts
- Lifts enabled with V3F drive and automatic rescue device (ARD)
- Generator back up for lift
- Natural stone cladding for lift entrance

DOOR & DOOR FRAMES

- Double notch laminated plywood door frames for the Main Door
- Single notch laminated plywood door frames for internal doors
- Both side laminated, flushed main & all internal doors with good quality fittings
- 3 track powder coated aluminum sliding doors with mosquito net for Living & Master bedroom terraces

FLOORING

- 600 x 600 vitrified tile in entire flat with 3" skirting
- 16" x 16" flooring in terraces
- 24" x 12" designer tiles in toilets
- 12" x 12" flooring for toilets and dry terraces

WINDOWS

- Three track powder coated aluminum sliding windows with Mosquito net

TOILETS

- Chrome plated bath fittings of Jaguar / Cera or equivalent make
- Hot and cold mixer in each bathroom
- Designer joint free tiles up to lintel level in all toilets
- Concealed plumbing
- Provision for Water Boiler
- Provision for Exhaust in all toilets
- Anti-cockroach Traps in all toilets
- Designer common Basin
- Solar Water System in one Toilet

PAINTING

- External paint: Semi acrylic paint
- Internal paint: Acrylic emulsion paint

The **Connectivity**

Healthcare

- Varad Hospital and Critical Care - 1.3 km
- Life Care Hospital - 3.7 km
- Aditya Birla Memorial Hospital - 8.7 km

Education

- SB Patil Public School - 2.3 km
- Vidya Valley World School - 9.6 km
- Vibgyor High - 10 km

IT Park

- Panchshil Tech Park, Hinjewadi - 10.5 km
- Talawade MIDC IT Park - 12.2 km
- Hinjewadi Tech Park - 13.1 km

Mall

- Nawu Mall & Multiplex - 2 km
- Dmart, Ravet - 4.6 km
- Xion Mall - 10.1 km

Restaurant

- Gayatree's - 0.7 km
- Seven Water Village - 1.7 km
- Sentosa Resort and Water Park - 2.2 km



The Credits

Architect

VK:A Architecture

Structural Consultant

Spectrum Consultants

Services Consultant

McLin Aqua Consultants

Landscape

Mahesh Chinchalkar

PMC

Planedge

Estimation

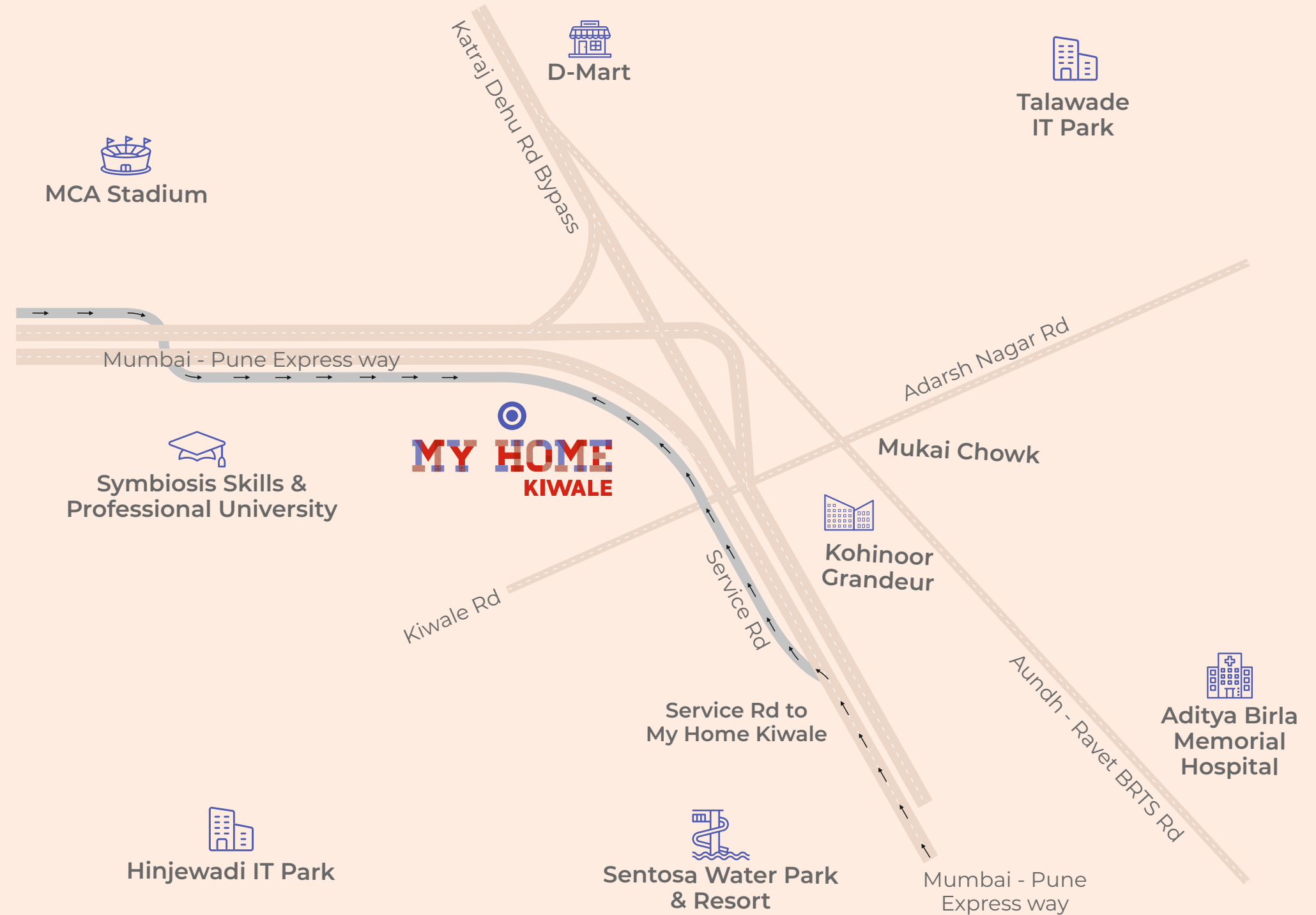
Keystone QS

Green Building

Sprout Consultants

Creative Agency

Atomium Labs



Location



mahaRERA no.: P52100026833
maharera.mahaonline.gov.in

Site address: Sr. No.: 8 Part, Off Pune-Mumbai Expressway, Before Symbiosis College, Kiwale,
Pune - 412101

Contact no: 020 7196 6688

Website: goyalproperties.in

Disclaimer: This brochure is purely conceptual and not a legal offering. The developer reserves all the rights to amend the areas, layouts, plans, elevations, amenities and specifications at any point. The content of this brochure cannot be reproduced without the consent of the developer and designer. All pictures are for representation purpose only.